



**DEPARTMENT OF ARTS AND EDUCATION**

**COURSE OUTLINE – FALL SEMESTER 2011**

**SO 1000 (D2) – Introductory Sociology**

**INSTRUCTOR:** René R. Gadacz, Ph.D   **PHONE:** 780.539.2831  
**OFFICE:** C-216                           **E-MAIL:** rgadacz@gprc.ab.ca

**OFFICE HOURS:** Daily; by appointment; drop-ins especially welcome

**PREREQUISITE(S)/COREQUISITE(S):** none

**REQUIRED TEXT(S)/RESOURCE MATERIALS:** John Macionis, S. Mikael Jansson & Cecilia Benoit, 2012 (updated 4<sup>th</sup> Canadian edition), Society: The Basics. Pearson/Prentice-Hall: Toronto.

**CALENDAR DESCRIPTION:** This course examines the theory, methods, and substance of sociology. How societies and individuals are shaped and modified by culture, socialization, deviance, stratification, group processes, industrialization, and social movements will be covered.

**CREDIT/CONTACT HOURS:** (3-0-0) UT 45 hours

**DELIVERY MODE(S):** lectures, class discussion, group work, class presentations, written tests, written projects

**OUTCOMES:** students will be able to identify essential sociological concepts and their historical foundation, understand the relation between individual behavior and society, appreciate the 'sociological imagination', understand the theories and methodologies of sociology as a social science (the research process).

**TRANSFERABILITY:** Grade of D or D+ may not be acceptable for transfer to other post-secondary institutions. Transfers to: U of A, UC, AU, UL, AF, CU, CUC, KUC.

**STATEMENT ON PLAGIARISM AND CHEATING:**

Please refer to the College Policy on Student Misconduct: Plagiarism and Cheating at [www.gprc.ab.ca/about/administration/policies/](http://www.gprc.ab.ca/about/administration/policies/)

**GRADING CRITERIA:**

<b>GRANDE PRAIRIE REGIONAL COLLEGE</b>			
<b>GRADING CONVERSION CHART</b>			
<b>Alpha Grade</b>	<b>4-point Equivalent</b>	<b>Percentage Guidelines</b>	<b>Designation</b>
<b>A<sup>+</sup></b>	<b>4.0</b>	<b>95 – 100</b>	<b>EXCELLENT</b>
<b>A</b>	<b>4.0</b>	<b>85 – 94</b>	
<b>A<sup>-</sup></b>	<b>3.7</b>	<b>80 – 84</b>	<b>FIRST CLASS STANDING</b>
<b>B<sup>+</sup></b>	<b>3.3</b>	<b>76 – 79</b>	
<b>B</b>	<b>3.0</b>	<b>73 – 75</b>	<b>GOOD</b>
<b>B<sup>-</sup></b>	<b>2.7</b>	<b>70 – 72</b>	
<b>C<sup>+</sup></b>	<b>2.3</b>	<b>67 – 69</b>	<b>SATISFACTORY</b>
<b>C</b>	<b>2.0</b>	<b>63 – 66</b>	
<b>C<sup>-</sup></b>	<b>1.7</b>	<b>60 – 62</b>	
<b>D<sup>+</sup></b>	<b>1.3</b>	<b>55 – 59</b>	<b>MINIMAL PASS</b>
<b>D</b>	<b>1.0</b>	<b>50 – 54</b>	
<b>F</b>	<b>0.0</b>	<b>0 – 49</b>	<b>FAIL</b>
<b>WF</b>	<b>0.0</b>	<b>0</b>	<b>FAIL, withdrawal after the deadline</b>

## EVALUATIONS:

Term Test #1 (20 points).....	October 3rd
Term Test #2 (20 points).....	November 4th
Term Test #3 (20 points).....	December 5th
Check-Up-From-the-Neck-Up Pop Quiz (10 points)..	<b>anytime</b> 😊
Daily Group Current Events Presentations (2 x 10)...	<b>starts</b> September 16th
Assignments (3 x 20 points = 60 points).....	TBA

[Total points are 150; your total points will be converted to a percent (%) grade to determine your letter grade. For example,  $110/150 = 73/100 = 73\% = B$  ]

## STUDENT RESPONSIBILITIES:

**Tests (60 points)** consist of multiple choice questions, true-and-false, and/or glossary terms/concepts (short answers) -- based on all lecture and text materials. **Note that there is no final exam.** Details on the **assignments (60 points)** will be discussed early in the semester. **The last assignment will be due in class on the last day of classes, December 9<sup>th</sup>.** The other assignment dates will be announced. Attendance at lectures is strong advised; the same applies to your active participation during class.

## PLEASE NOTE:

🚨 A missed exam unfortunately cannot be accommodated - **unless** the situation is an unexpected personal or family emergency. **No make-up exams unless it's an emergency.**

What the course assignment(s) and current events/media presentations entails (80 points of your course grade) will be discussed in detail as classes get underway and as the course progresses. **You will be provided with instructions and relevant information with plenty of lead time. Details and due dates will be announced in class and on Moodle.**

Plagiarism detection software may be used in this course, and students may be required, individually or collectively, to submit key assignments/components in electronic form.

It is your responsibility to ensure that all your work is at a level appropriate to your year in college/university studies. Always spell- and grammar-check your work; always keep a hard copy or disk copy of your work as back-up. There is writing help on campus, and if in doubt you are always welcome to ask me, your instructor, for clarification. Poor spelling, grammar and organization interferes with the clear communication of ideas and you *will* lose marks if your over-all communication is ineffective.

Attendance at lectures is strongly encouraged; the same applies to your participation in class discussions. ***Be an active participant in your education!***

**Late assignments (or any applicable assignment/course components) will result in an automatic loss of 5 marks (of the value of the work) PER DAY, up to and including the day of a late submission, unless immediate or prior arrangements, based on exceptional circumstances, have been made. Documented personal or family emergencies, of course, will be accommodated.**

#### **COURSE SCHEDULE/TENTATIVE TIMELINE:**

##### **Week of (Fall 2011):**

September 9 – Outlines; course requirements; brief organizational meeting...

September 12, 16 – Macionis, et. al, Chapter 1, 2: Introduction to an analytical model for the study of society; Theory and research methods in sociology

September 19, 23 – Macionis, et. al, Chapter 2 & 3: Theory and Methods continued; begin Culture and Socialization

September 26, 30 – Macionis, et. al, Chapter 4 & 5: Interaction, Groups and Organizations

October 3, 7 – Macionis, et. al, Chapter 6 & 7: Sexuality and Deviance;

**TERM TEST #1 ON MONDAY THE 3rd**

October 10, 14 – Macionis, et. al, Chapter 8, 10 & 11: Gender, Race and Inequality  
[no class on Monday October 10<sup>th</sup> – Thanksgiving]

October 17, 21 – Macionis, et. al, Chapter 9: Global Stratification; Chapter 12:  
Economic and Political processes;

October 24, 28 – Cont'd: Macionis, et. al. Chapter 9 and 12, continued

October 31, November 4 – Macionis, et. al., Chapter 13: Family and Religion

**TERM TEST #2 ON FRIDAY THE 4th**

November 7, 11 – Macionis, et. al, Chapter 13: Family and Religion; Chapter 14:

Education and health/medicine [no class on Friday the 11<sup>th</sup> – Remembrance Day]

November 14, 18 – Macionis, et. al, Chapter 14 & 15: Health/Medicine; Demography

November 21, 25 – Macionis, et. al, Chapter 15 & 16: Urbanization, Social/Societal  
Change

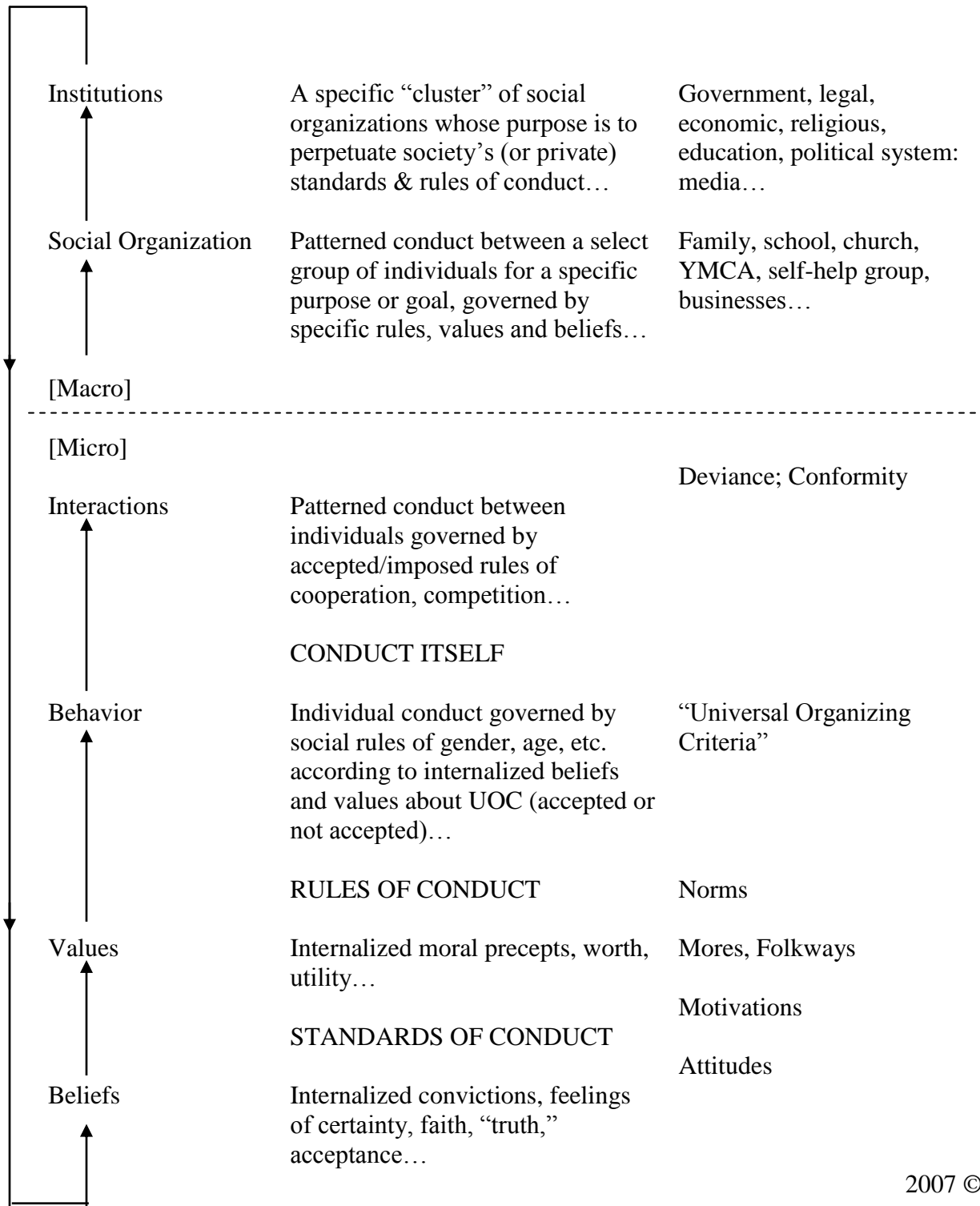
November 28, December 2 – Cont'd: Chapter 15 & 16: Social Change..

December 5, 9 – Wrap-up; **TERM TEST #3 on Monday the 5th**

[Classes end Friday, December 9, 2011]

## GENERAL SCHEME OF SOCIETY

### “The Social System”



2007 © R. Gadacz

***Six Ways To Make This Course More Valuable:***

- 1. Participate, to engage your learning**
- 2. Question, to enhance your learning**
- 3. Read, to expand your learning**
- 4. Reflect, to measure your learning**
- 5. Apply, to transfer your learning**
- 6. Innovate, to adapt your learning**