



DEPARTMENT OF ARTS AND EDUCATION

COURSE OUTLINE – FALL SEMESTER 2010

SO 1000 – Introductory Sociology

INSTRUCTOR: René R. Gadacz, Ph.D **PHONE:** 780.539.2831
OFFICE: C-216 **E-MAIL:** rgadacz@gprc.ab.ca

OFFICE HOURS: Daily, when not in class, as well as by appointment

PREREQUISITE(S)/COREQUISITE: none

REQUIRED TEXT/RESOURCE MATERIALS: please see next page

CALENDAR DESCRIPTION: please refer to 2010-2011 Calendar, page 225

CREDIT/CONTACT HOURS: 3 (3-0-0) UT 45 hours

DELIVERY MODE(S): lectures, class discussion, group work, class presentations, written tests, written projects

TRANSFERABILITY:

Grade of D or D+ may not be acceptable for transfer to other post-secondary institutions. Transfers to U of A, UC, AU, UL, AF, CU, CUC, KUC.

STATEMENT ON PLAGIARISM AND CHEATING:

Please refer to pages 48-49 of the 2010-2011 GPRC College calendar regarding plagiarism, cheating, and the resultant penalties.

**Sociology 1000 [C2]
INTRODUCTION TO SOCIOLOGY**

Fall Semester, 2010
Grande Prairie Regional College
Tuesday & Thursday: 11:30 - 12:50 hrs

Instructor: Dr. René R. Gadacz
Phone: 539-2831; Office: C216
E-Mail: rgadacz@gprc.ab.ca

The aim of this course is to provide an introduction to the `sociological perspective` and the sociological/social science enterprise. Central to the sociological perspective is to show the close relationship between how people interact with each other, and how organizations and institutions impact upon or govern their interaction. We will explore this two-way relationship by studying the fundamental principles by which societies and cultures are organized, and by examining the variety and kinds of organizations, institutions and behavior patterns people have created and engage in. The *interdisciplinary* and *empirical* nature of social science research will be stressed in this course.

COURSE REQUIREMENTS AND GRADING

Term Test #1 (20 points)..... September 30
Term Test #2 (20 points)..... November 2
Term Test #3 (20 points)..... December 7
Daily Group Current Events Presentations (20 points) *starts* September 14
Assignments (4 @ 10 points each)..... TBA; #4 due December 2

[Total points are 120; your total points will be converted to a percent (%) grade to determine your letter grade. For example, $100/120 = 83\% = A-$]

REQUIRED TEXTS

[other materials will be distributed on an as-needed basis]

John Macionis, S. Mikael Jansson & Cecilia Benoit, 2008 (4th Canadian edition), Society: The Basics.
Pearson/Prentice-Hall: Toronto.

EXAMINATIONS AND SEMESTER WORK

Tests (60 points) consist of multiple choice questions, true-and-false, and/or glossary terms/concepts -- based on all lecture and text materials. Details on the *assignments (40 points)* will be discussed early in the semester. ***Note that there is no final exam as such; the last assignment, will be due in class on the last day of classes December 2nd.*** The other assignment dates will be announced. Attendance at lectures is strongly advised; the same applies to your active participation during class.

PLEASE NOTE:

☛ A missed exam unfortunately cannot be accommodated - ***unless the situation is an unexpected personal or family emergency. No make-up exams unless it's an emergency.***

What the course assignment(s) and group media presentations entails (60 points of your course grade) will be discussed in detail as classes get underway and as the course progresses. ***You will be provided with instructions and relevant information with plenty of lead time. Details and due dates will be announced in class and on Blackboard.*** FOR THE PURPOSES OF COURSE ASSIGNMENTS, STUDENTS WILL WORK IN GROUPS OF 2 EACH.

Plagiarism detection software may be used in this course, and students may be required, individually or collectively, to submit key assignments/components in electronic form.

It is your responsibility to ensure that all your work is at a level appropriate to your year in college/university studies. Always spell- and grammar-check your work; always keep a hard copy or disk copy of your work as back-up. There is writing help on campus, and if in doubt you are always welcome to ask me, your instructor, for clarification. Poor spelling, grammar and organization always interferes with the clear communication of ideas and you *will* lose marks if your over-all communication is ineffective.

Attendance at lectures is strongly encouraged; the same applies to your participation in class discussions. ***Be an active participant in your education!***

Late assignments (or any applicable assignment/course components) will result in an automatic loss of 5 marks (of the value of the work) PER DAY, up to and including the day of a late submission, unless immediate or prior arrangements, based on exceptional circumstances, have been made. Documented personal or family emergencies, of course, will be accommodated.

WEEKLY LECTURE/READING SCHEDULE

Refer to the *detailed* table of contents of the text for more specific chapter content. Lectures will not always follow the book sequence but you will still be responsible for the contents of the chapters for each particular week. The chapters and weeks will overlap, giving you the chance to get ‘caught up’ or to read ahead, as the case may be. *The chapter schedule below is intended to help you set a pace.* Some chapters will be treated as a topic ‘unit’ and **so will be read together** for a greater understanding of the topic/issues (e.g., 2 and 3; 3 and 7; 8 and 9, etc. – **your instructor will alert/remind you as to which chapters should be read together**). Also please note that lecture content will include material that does *not* appear in the text – so this is a ‘heads up’ on why it’s important to attend class on a regular basis!

September 2 – Outlines; brief organizational meeting...

September 7, 9 – Macionis, et. al, Chapter 1: Introduction to an analytical model for the study of society; Theory and research methods in sociology

September 14, 16 – Macionis, et. al, Chapter 1, 2 & 3: Theory and method continued; Culture and socialization

September 21, 23 – Macionis, et. al, Chapter 3, 4 & 5: Interaction, groups and organizations

September 28, 30 – Macionis, et. al, Chapter 6 & 7: Deviance [and sexuality] **Test #1**

October 5, 7 – Macionis, et. al, Chapter 8, 10 & 11: Gender, race, and inequality

October 12, 14 – Macionis, et. al, Chapter 8, 10 & 11: Gender, race, and inequality

October 19, 21 – Macionis, et. al, Chapter 9: Global stratification

October 26, 28 – Macionis, et. al, Chapter 9; 12: Economic and political processes;

November 2, 4– Macionis, et. al, Chapter 12; 13: Family [and religion] **Test #2**

November 9, (**11**) – Macionis, et. al, Chapter 13; 14: Education [and health/medicine]

November 16, 18 – Macionis, et. al, Chapter 14 & 15: Health/medicine;

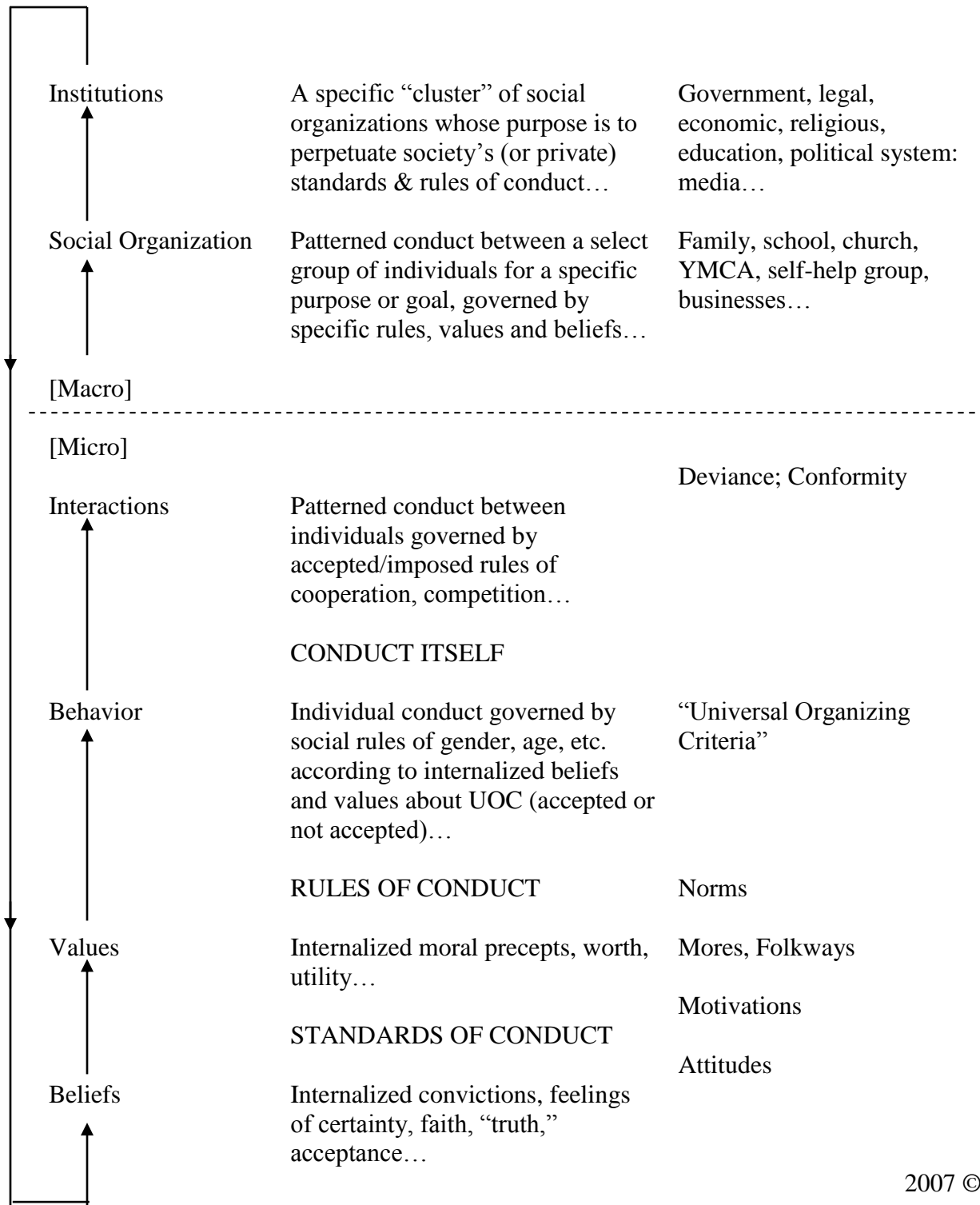
November 23, 25 – Macionis, et. al, Chapter 15 & 16: the Environment/Social change

November 30, December 2 – Macionis, et. al. Chapter 16: Social change...

December 7 – **Test #3**, *and* it's the last day of classes!

GENERAL SCHEME OF SOCIETY

“The Social System”



2007 © R. Gadacz

GRADING SYSTEM

Letter Grade	Grade Point Value	Percentage Range	Description
A+	4.0	95 - 100	<i>Outstanding</i>
A	4.0	85 - 94	<i>Excellent</i>
A-	3.7	80- 84	
B+	3.3	76 - 79	
B	3.0	73 - 75	<i>Good</i>
B-	2.7	70 - 72	
C+	2.3	67 - 69	
C	2.0	64 - 66	<i>Satisfactory</i>
C-	1.7	60 - 63	
D+	1.3	55 - 59	
D	1.0	50 - 54	<i>Minimal Pass</i>
F	0.0	0 - 49	<i>Fail</i>

Six Ways To Make This Course More Valuable:

- 1. Participate, to engage your learning**
- 2. Question, to enhance your learning**
- 3. Read, to expand your learning**
- 4. Reflect, to measure your learning**
- 5. Apply, to transfer your learning**
- 6. Innovate, to adapt your learning**