

Sociology 1000 [B3]  
**INTRODUCTION TO SOCIOLOGY**

Winter Semester, 2009  
Grande Prairie Regional College  
Monday (13:00-14:20 hrs); Friday (11:30-12:50 hrs)

Instructor: Dr. René R. Gadacz  
Phone: 539-2831; Office: C216  
E-Mail: rgadacz@gprc.ab.ca

---

The aim of this course is to provide an introduction to the 'sociological perspective' and the sociological/social science enterprise. Central to the sociological perspective is to show the close relationship between how people interact with each other, and how organizations and institutions impact upon or govern their interaction. We will explore this two-way relationship by studying the fundamental principles by which societies and cultures are organized, and by examining the variety and kinds of organizations, institutions and behavior patterns people have created and engage in. The *interdisciplinary* and *empirical* nature of social science research will be stressed in this course.

**COURSE REQUIREMENTS AND GRADING**

Term Test #1 (20 points)..... February 13th  
Term Test #2 (20 points)..... March 13th  
Term Test #3 (20 points)..... April 13<sup>th</sup>  
Daily Group Current Events Presentations (20 points) *starts* January 16th  
Assignments (4 @ 10 points each)..... TBA; #4 due April 13<sup>th</sup>

[Total points are 120; your total points will be converted to a percent (%) grade to determine your letter grade. For example, 100/120 = 83% = A- ]

**REQUIRED TEXTS**

**[other materials will be distributed on an as-needed basis]**

John Macionis, S. Mikael Jansson & Cecilia Benoit, 2008 (4<sup>th</sup> Canadian edition), Society: The Basics. Pearson/Prentice-Hall: Toronto.

## EXAMINATIONS AND SEMESTER WORK

*Tests (60 points)* consist of multiple choice questions, true-and-false (+ justified!), and/or glossary terms/concepts -- based on all lecture and text materials. Details on the *assignments (60 points)* will be discussed early in the semester. **Note that there is no final exam; the last assignment, will be due in class on the last day of classes, April 13<sup>th</sup>.** The other assignment dates will be announced. Attendance at lectures is strongly advised; the same applies to your active participation during class.

### **PLEASE NOTE:**

● A missed exam unfortunately cannot be accommodated - *unless* the situation is an unexpected personal or family emergency. **No make-up exams unless it's an emergency.**

**What the course assignment(s) and group media presentations entails (60 points of your course grade) will be discussed in detail as classes get underway and as the course progresses. You will be provided with instructions and relevant information with plenty of lead time. Details and due dates will be announced in class and on Blackboard.**

Plagiarism detection software may be used in this course, and students may be required, individually or collectively, to submit key assignments/components in electronic form.

It is your responsibility to ensure that all your work is at a level appropriate to your year in college/university studies. Always spell- and grammar-check your work; always keep a hard copy or disk copy of your work as back-up. There is writing help on campus, and if in doubt you are always welcome to ask me, your instructor, for clarification. Poor spelling, grammar and organization always interferes with the clear communication of ideas and you *will* lose marks if your over-all communication is ineffective.

Attendance at lectures is strongly encouraged; the same applies to your participation in class discussions. ***Be an active participant in your education!***

**Late assignments (or any applicable assignment/course components) will result in an automatic loss of 5 marks (of the value of the work) PER DAY, up to and including the day of a late submission, unless immediate or prior arrangements, based on exceptional circumstances, have been made. Documented personal or family emergencies, of course, will be accommodated.**

\*\*\*\*\*

## WEEKLY LECTURE/READING SCHEDULE

Refer to the *detailed* table of contents of the text for more specific chapter content. Lectures will not always follow the book sequence but you will still be responsible for the contents of the chapters for each particular week. The chapters and weeks will overlap, giving you the chance to get ‘caught up’ or to read ahead, as the case may be. *The chapter schedule below is intended to help you set a pace.* Some chapters will be treated as a topic ‘unit’ and **so should be read together** for a greater understanding of the topic/issues (e.g., 2 and 3; 3 and 7; 8 and 9, etc. – **your instructor will alert/remind you as to which chapters should be read together**). Also please note that lecture content will include material that does *not* appear in the text – so this is a ‘heads up’ on why it’s important to attend class on a regular basis!

### Week of:

January 5, [9] – Outlines, brief organizational meeting...

January 12, 16 – Macionis, et. al, Chapter 1: Introduction to an analytical model for the study of society; Theory and research methods in sociology

January 19, 23 – Macionis, et. al, Chapter 1, 2 & 3: Theory and method continued; Culture and socialization

January 26, 30 – Macionis, et. al, Chapter 3, 4 & 5: Interaction, groups and organizations

February 2, 6 – Macionis, et. al, Chapter 6 & 7: Sexuality and deviance;

February 9, **13** – Macionis, et. al, Chapter 8, 10 & 11: Gender, race and inequality

**TERM TEST #1 ON FRIDAY THE 13TH**

February 16, 20 – Macionis, et. al, Chapter 8, 10 & 11: Gender, race and inequality

**Family Day, and Winter Break – no classes!**

February 23, 27 – Macionis, et. al, Chapter 9: Global stratification

March 2, 6 – Macionis, et. al, Chapter 12: Economic and political processes;

March 9, **13** – Macionis, et. al, Chapter 13: Family and religion

**TERM TEST #2 ON FRIDAY THE 13TH**

March 16, 20 – Macionis, et. al, Chapter 14: Education and health/medicine

March 23, 27 – Macionis, et. al, Chapter 14 & 15: Health/medicine; demography

March 30, April 3 – Macionis, et. al, Chapter 15 & 16: Urbanization, [the environment] and social/societal change

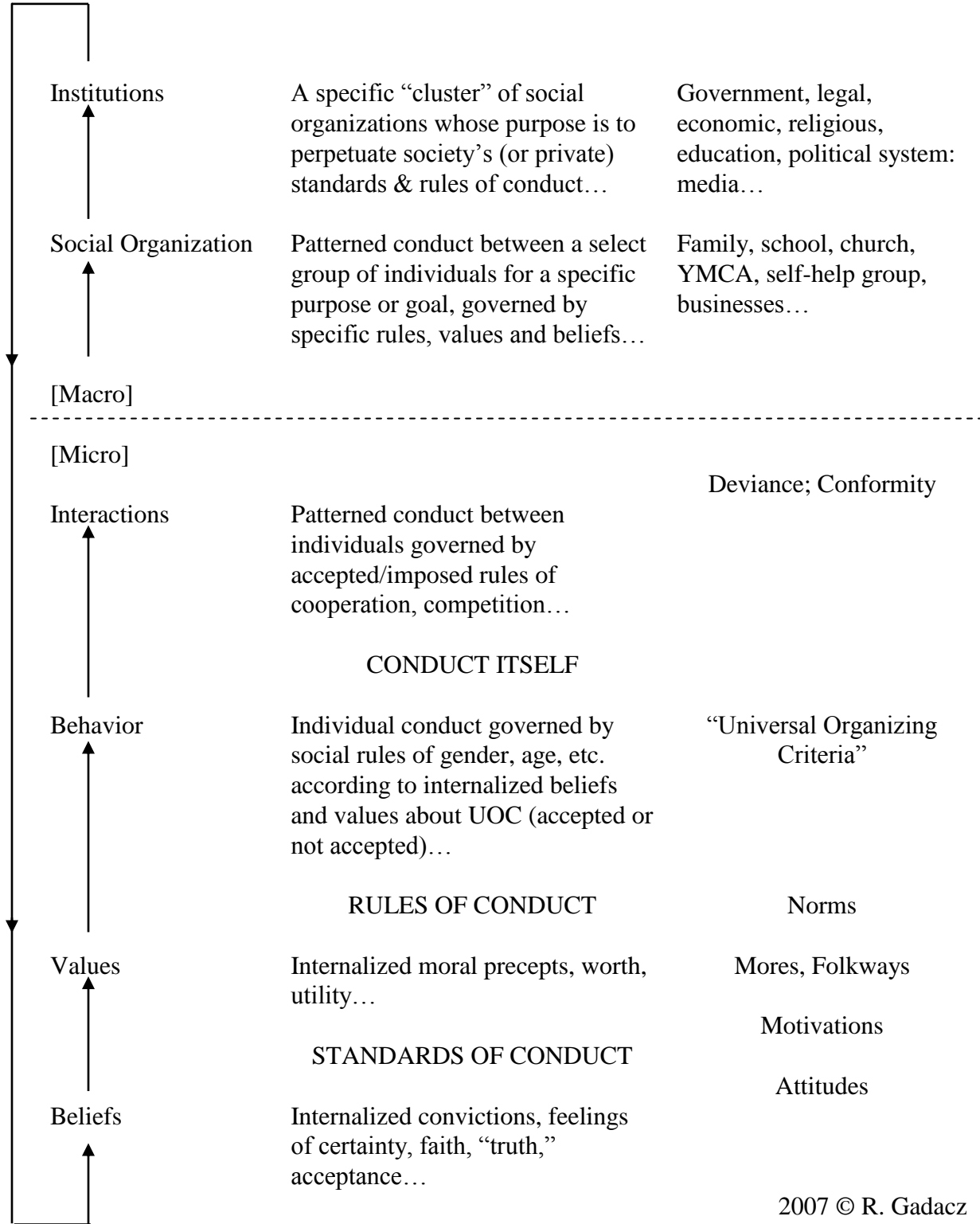
April 6, **10** – **Good Friday on the 10th, no classes**

April **13** – **TERM TEST #3 today and Assignment # 4 due**

[Classes end April 14, 2009]

# GENERAL SCHEME OF SOCIETY

## “The Social System”



## GRADING SYSTEM

Letter Grade	Grade Point Value	Percentage Range	Description
<b>A+</b>	<b>4.0</b>	<b>95 - 100</b>	<b><i>Outstanding</i></b>
<b>A</b>	<b>4.0</b>	<b>85 - 94</b>	<b><i>Excellent</i></b>
<b>A-</b>	<b>3.7</b>	<b>80 - 84</b>	
<b>B+</b>	<b>3.3</b>	<b>76 - 79</b>	
<b>B</b>	<b>3.0</b>	<b>73 - 75</b>	<b><i>Good</i></b>
<b>B-</b>	<b>2.7</b>	<b>70 - 72</b>	
<b>C+</b>	<b>2.3</b>	<b>67 - 69</b>	
<b>C</b>	<b>2.0</b>	<b>64 - 66</b>	<b><i>Satisfactory</i></b>
<b>C-</b>	<b>1.7</b>	<b>60 - 63</b>	
<b>D+</b>	<b>1.3</b>	<b>55 - 59</b>	
<b>D</b>	<b>1.0</b>	<b>50 - 54</b>	<b><i>Minimal Pass</i></b>
<b>F</b>	<b>0.0</b>	<b>0 - 49</b>	<b><i>Fail</i></b>

### ***Six Ways To Make This Course More Valuable:***

- 1. Participate, to engage your learning**
- 2. Question, to enhance your learning**
- 3. Read, to expand your learning**
- 4. Reflect, to measure your learning**
- 5. Apply, to transfer your learning**
- 6. Innovate, to adapt your learning**